

Bring Your Network To Your Employees With Enterprise at Home



The Enterprise at Home solution leverages Mist Wi-Fi, Mist Edge, and Juniper Connected Security to extend the AI-driven enterprise to remote workforces. Using zero-touch provisioning, Juniper security hardware and Mist Wi-Fi access points can be deployed remotely without a technician visit.

The shift to a remote workforce has made business continuity more important. Keeping users connected, productive and secure without losing the agility and reliability needed to scale to support evolving demands.



Up to 75 million U.S. employees could work remotely.*

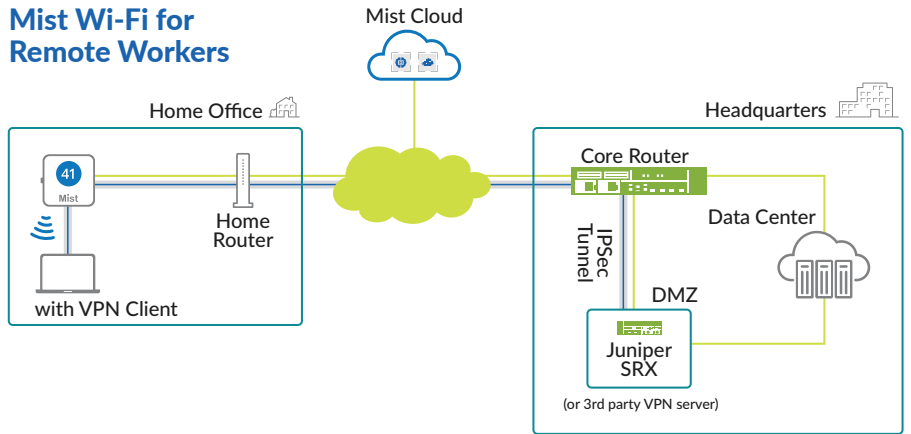


According to a recent Gartner CFO survey, nearly a quarter of respondents said they will move at least 20% of their on-site employees to permanent remote positions.**

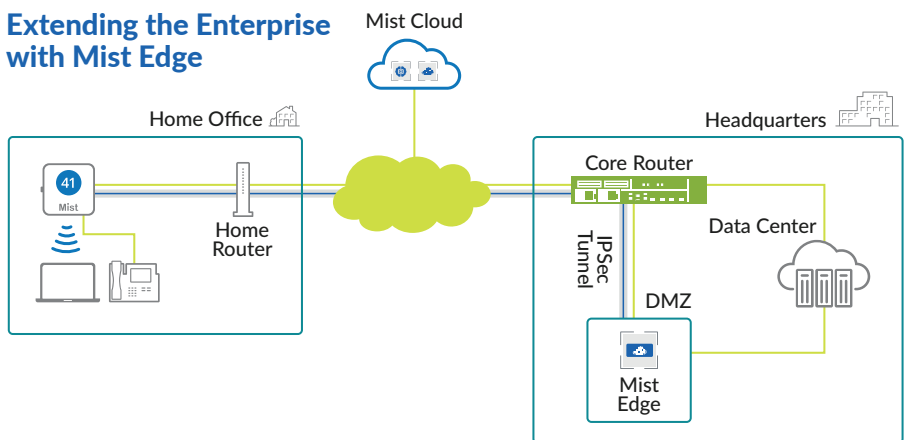


62% of employed Americans currently say they have worked from home during the crisis, a number that has doubled since mid-March.***

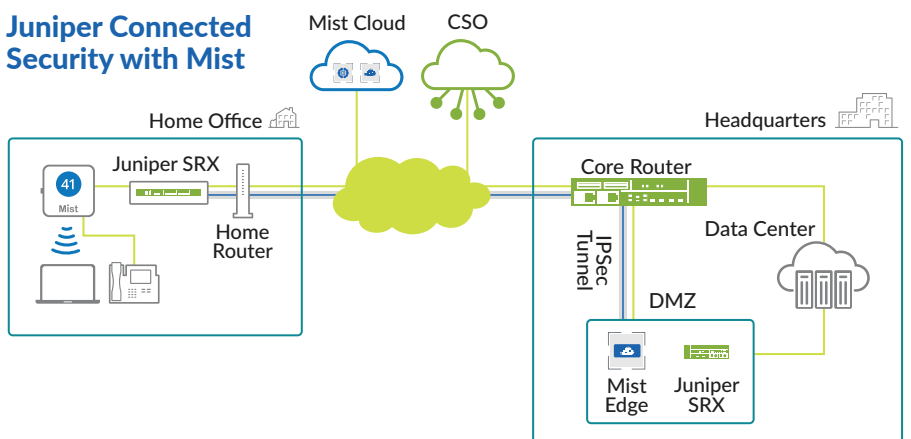
Mist Wi-Fi for Remote Workers



Extending the Enterprise with Mist Edge



Juniper Connected Security with Mist



Gain AI-driven insights into remote user experiences



Eliminate overlay VPN technologies



Monitor Wi-Fi to secure corporate traffic



Increase security and segment business traffic



Keep threats in check with advanced security services



Cultivate a dynamic, flexible, adaptable network

Learn more about Enterprise at Home. Get started at:
<https://www.mist.com/enterprise-at-home/>

*Global Workforce Analytics, 2020

**Gartner Press Release (Gartner CFO Survey Reveals 74% Intend to Shift Some Employees to Remote Work Permanently, April 3, 2020)

***Gallup, 2020



Corporate and Sales Headquarters
 Juniper Networks, Inc.
 1133 Innovation Way
 Sunnyvale, CA 94089 USA
 Phone: 888.JUNIPER (888.586.4737)
 or +1.408.745.2000
 Fax: +1.408.745.2100
www.juniper.net

APAC and EMEA Headquarters
 Juniper Networks International B.V.
 Boeing Avenue 240
 1119 PZ Schiphol-Rijk
 Amsterdam, The Netherlands
 Phone: +31.0.207.125.700
 Fax: +31.0.207.125.701